



A new beginning for the Red House- Harpenden Health and Wellbeing Campus

David Law

CEO Hertfordshire Community NHS Trust

*Your partner
in health*



Redevelopment at Harpenden meets HCT Strategic Objectives

1. Support People to manage their own health and wellbeing
2. Improve clinical outcomes and enhance patient safety
3. Substantial expansion of community services through delivery of excellent core services for adults and children
4. Efficient use of resources
5. Ensure that HCT can deliver its vision and objectives

Strategic redevelopment of Hertfordshire Community Estates

- In April 2013 HCT there was a national transfer of properties from centralised ownership by DOH to localised NHS organisations such as HCT.
- HCT now owns the freehold or leases around 60 properties across Herts, and uses another 25 properties.
- HCT is continuing to develop an Estate strategy for delivery of its operations across Hertfordshire, which will improve healthcare, by provision of buildings which are in the best location, cost-effective to run and fit for purpose.
- Redevelopment must be well planned and takes time. 5-10 years to see significant change
- Redevelopment of the Harpenden Memorial Hospital site (The Red House) is part of the planned strategy

Care closer to home through integration of Care

- Community Hospitals are not the only option to deliver care closer to home. The landscape has changed. The emergence of the Health and Wellbeing Campus.
- Collaboration of all organisations delivering care
 - Community Trusts – HCT and Hertfordshire Partnerships Foundation Trusts
 - County and Local Councils – Hertfordshire County , St Albans District, Harpenden Town
 - Primary Care – GPs and Herts Valleys Clinical Commissioning Groups (HVCCG)
 - Secondary care – West Herts Hospitals Trust and Luton and Dunstable Hospital Trust
- Development of integrated community teams

Why redevelop Harpenden Memorial Hospital Site?

- Demographics
 - Resident population in St Albans and Harpenden District
 - St Albans ,90,000
 - Harpenden 50,000
- Distribution of services and office accommodation is uneven. Harpenden residents have few local services.
 - No local rehabilitation facilities, respite care facilities or palliative care facilities.
- Maintain Harpenden Memorial as a healthcare site
- Few assisted places for older residents of Harpenden
- Lack of Care and Nursing home beds in Harpenden
- Use Harpenden as a western hub for some Hertfordshire wide services
- Increasing children's population in the north of the district

Harpenden Memorial Hospital site today

Maldon Court

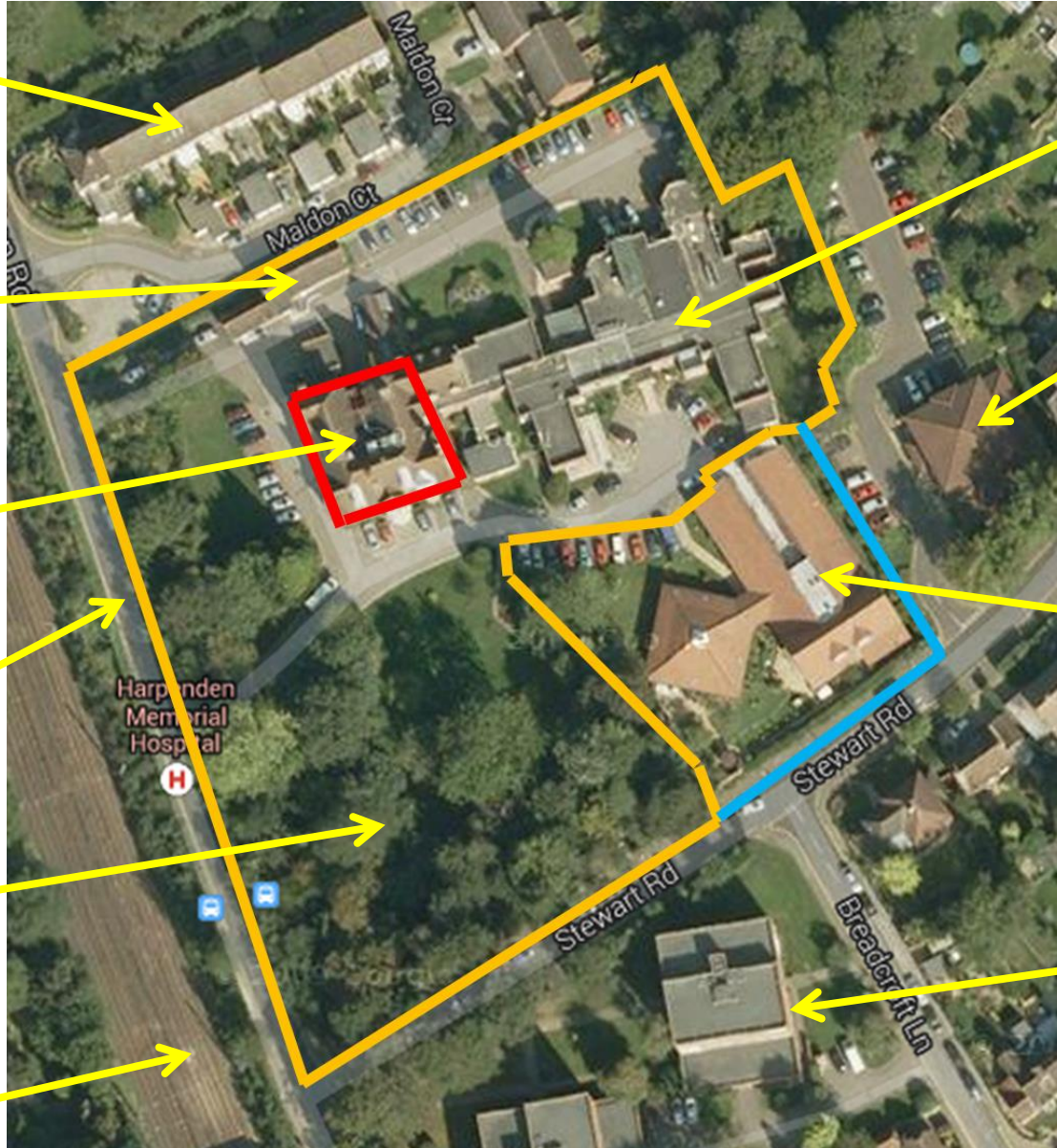
Halley Stewart Clinic

Red House

Carlton Road

Wooded Area

Railway Line



Extension to the Red House

The Elms GP Surgery

The Stewarts Herts Partnerships Trust

Residential Flats

Current services at Harpenden Memorial Hospital site

Space	Service	Details
Red House	Clinics	Podiatry Dietetics Retinal Screening Heart Failure Bladder and Bowel Leg Ulcer Midwifery
	Outpatients	Gastroenterology Ophthalmology Plastic Surgery Dermatology
Halley Stewart	Clinics - Adult	Phlebotomy
	Clinics - children	Speech and Language Orthoptics (eyes) Audiology Bladder

Current offices and meeting rooms at Harpenden Memorial Hospital site

Space	Service	Details
Red House	Ground Floor offices	Dermatology Speech and Language Podiatry
	1 st Floor offices	Community Nursing Children's teams Special Care Dentistry Podiatry
	League of Friends meeting room	Multiple use – clinics, training , general meetings
	Day room	Staff meetings
	Rear Office	Ambulance trust on call room

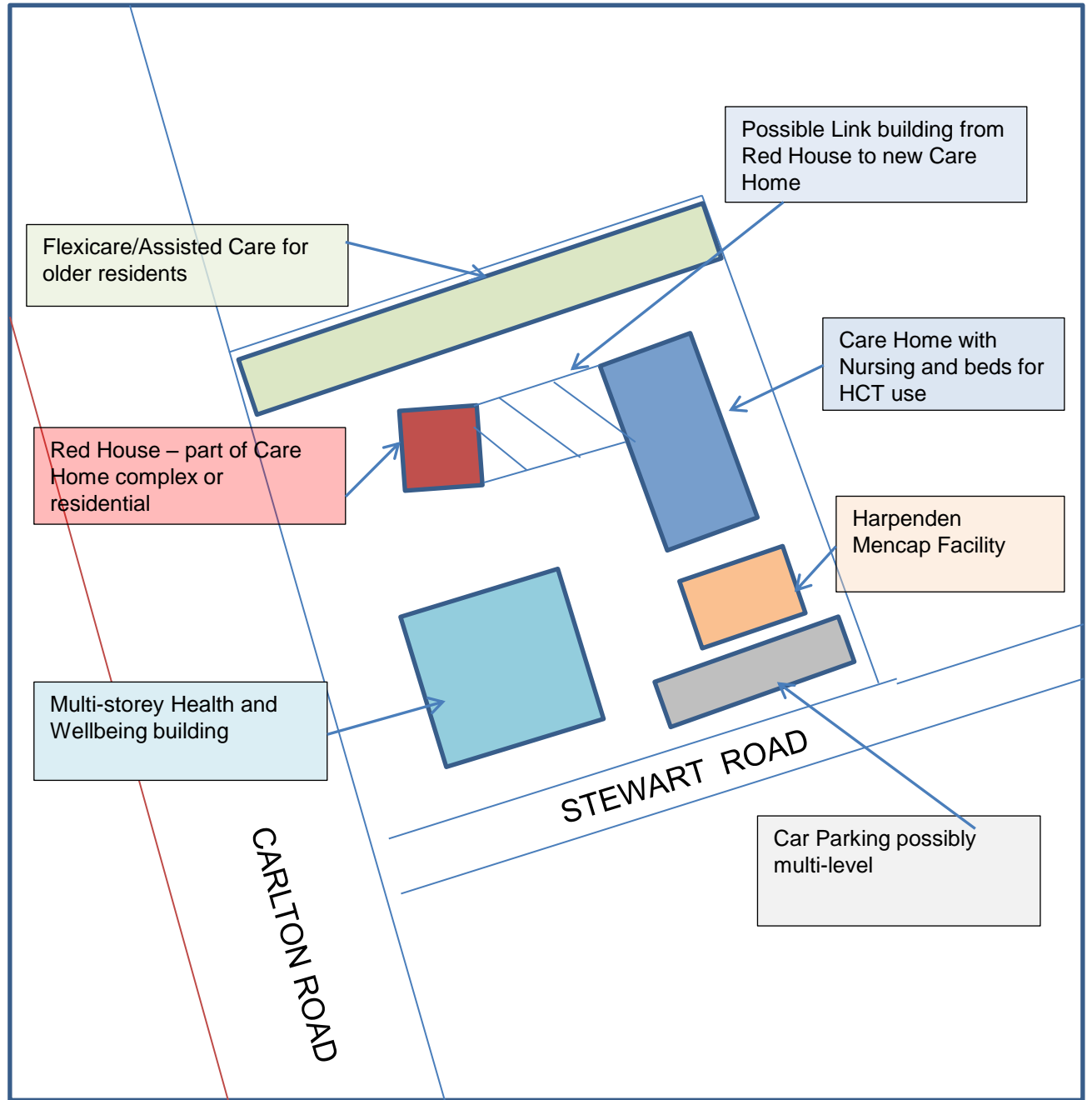
Options for the future

- Do nothing
- Declare the site surplus and sell it off
- Redevelop the site

Redeveloped site

- A multi-purpose development with a number of different private and public organisations working collaboratively
 - HCT
 - Other NHS organisations
 - Voluntary organisations such as MENCAP
 - Housing organisation
 - Council
 - Nursing and Care Home organisation
- Private finance will be required. Public Private Partnership

What an Integrated Health and Wellbeing Campus might look like at Harpenden Memorial Hospital



Health and Wellbeing building- What could it deliver?

The building will be designed to be multi-functional and offer accommodation which can be used for many different services.

Subject to collaborative discussion between all those providing or buying services.

Up to three floors may include but not limited to:

- Day centre for older people with a kitchen
- Meeting rooms – large and small
- Coffee shop
- Gym facilities for physiotherapy and cardiac rehab
- Consulting rooms
- Examination rooms
- Treatment rooms
- Investigation - ultrasound, cardiology
- Specialist Dental services hub
- Offices – limited number

Steps to completion

ITEM	COMPLETION
Develop the vision	September 2013
Consult widely	October 2013
Agree an option	December 2013
Architects and Surveyors plans	February 2014
Financial Consulting . Best option for delivery of the scheme	March/April 2014
Apply to NHS Trust Authority for approval	August 2014
Tender Process	February 2015
Appoint Development Partner	February 2015
Detailed site planning	February 2016
Commence Build	March 2016
Handover	September 2017

Your say is important

Integrated Care and Support – The Government’s Commitment - May 2013

- Any significant change to services also needs developing with the support of local people.
- Engaging patient groups and the public in an open dialogue at an early stage is essential if people are to understand that services will improve as a result.
- Commissioners, local authorities and local politicians as well as clinicians and other care professionals have a responsibility to provide “person-centred “ co-ordinated care with personal involvement in care planning.

*Your partner
in health*



Discussion

*Your partner
in health*



